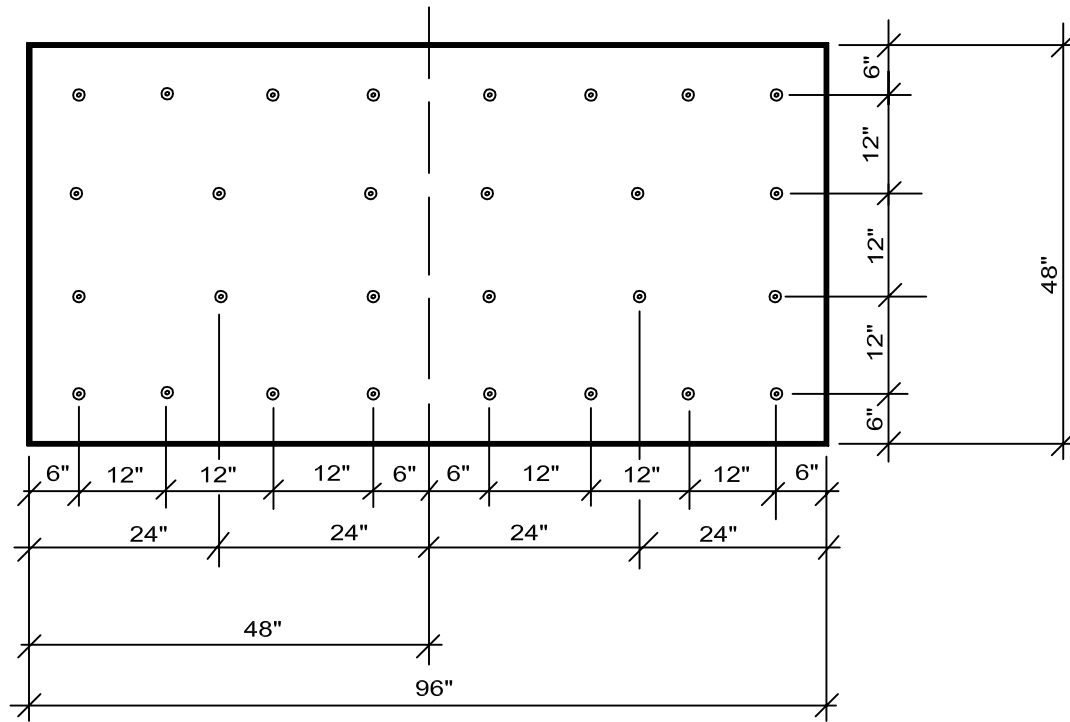


NOTE: THE ATTACHMENT PATTERN SHOWN MUST BE USED WHEN A FACTORY MUTUAL RATING IS REQUIRED. CONTACT MULE-HIDE FOR PERIMETER AND CORNER ATTACHMENT AND ACCEPTABLE ALTERNATIVE ATTACHMENT PATTERNS.



**MULE-HIDE
PRODUCTS CO., INC.
04/01/2004**

4'X8' (28 per board)
ATTACHMENT (1 PER 1.14 SQ FT)

SYSTEMS: FULLY ADHERED

DETAIL NO.:
MHE-206