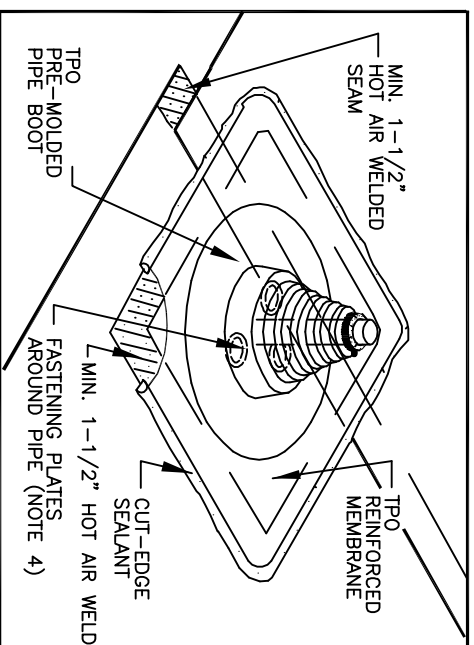
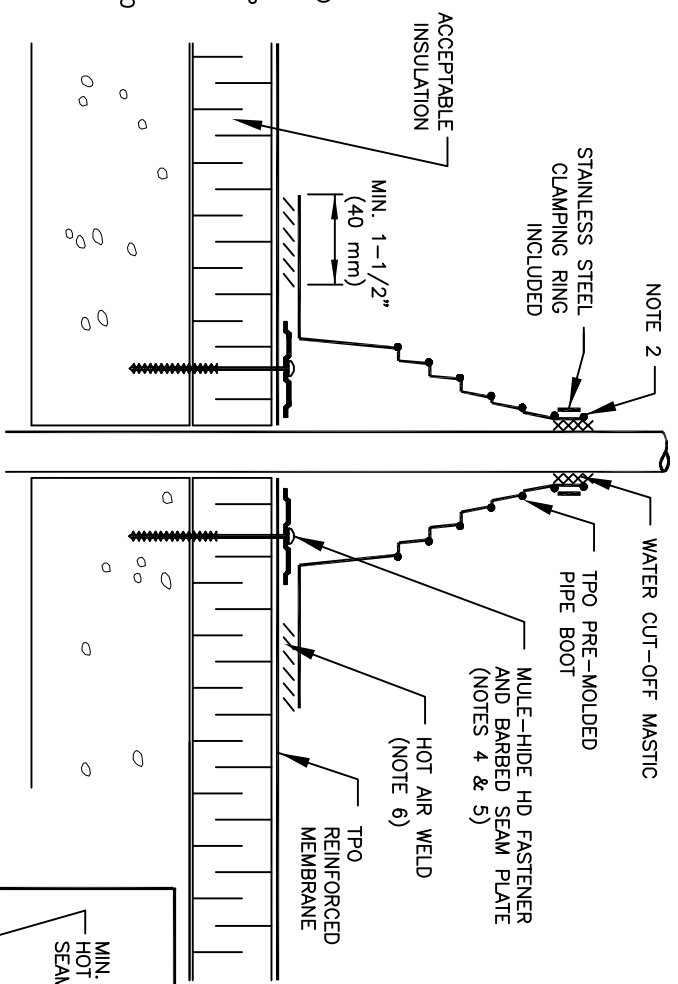


1" TO 6" (25 to 150 mm)



- NOTES:
1. REMOVE ALL LEAD AND OTHER FLASHING.
  2. TEMPERATURE OF PIPE MUST NOT EXCEED 180° F (82° C).
  3. PIPE SEAL MUST HAVE INTACT RIB AT TOP EDGE, REGARDLESS OF PIPE DIAMETER.
  4. INSTALL 3 FASTENERS AND PLATES AROUND PIPE EQUALLY SPACED. FASTENERS MAY ALSO BE POSITIONED MAXIMUM 12" (300 mm) FROM PIPE, FASTENED 12" ON CENTER AND FLASHED WITH TPO REINFORCED MEMBRANE.
- FASTENERS/PLATES ARE NOT REQUIRED ON ADHERED SYSTEMS UNLESS PIPE DIAMETER EXCEEDS 18" (500 mm).
5. IF PLATES CANNOT BE INSTALLED AS SHOWN THEY CAN BE POSITIONED OUTSIDE THE PIPE BOOT FLANGE AS SHOWN ON DETAIL MHT-UN-521A.
  6. PIPE BOOT DECK FLANGE MUST BE HOT AIR WELDED A MINIMUM OF 1-1/2" (40 mm) BEYOND FASTENING PLATES.
  7. INSTALL A SECTION OF TPO REINFORCED MEMBRANE OVER SEAM INTERSECTIONS PRIOR TO INSTALLING PRE-MOLDED PIPE BOOT.

**MULE-HIDE  
PRODUCTS CO., INC.  
2006**

**PRE-MOLDED PIPE BOOT  
TPO SYSTEMS: ALL**

**DETAIL NO.:  
MHT-UN-520**