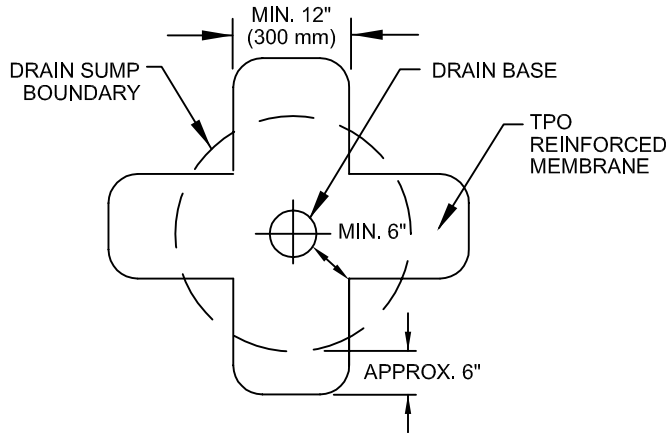
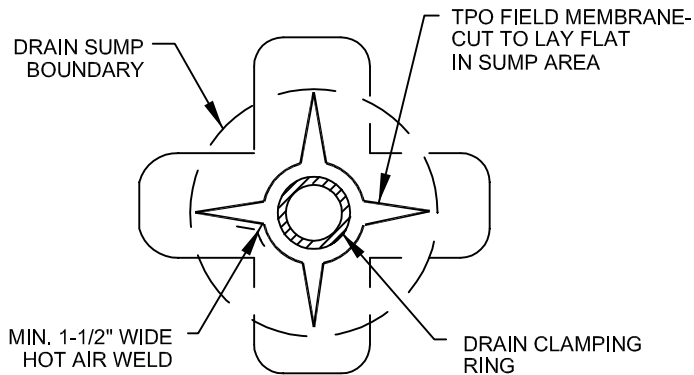


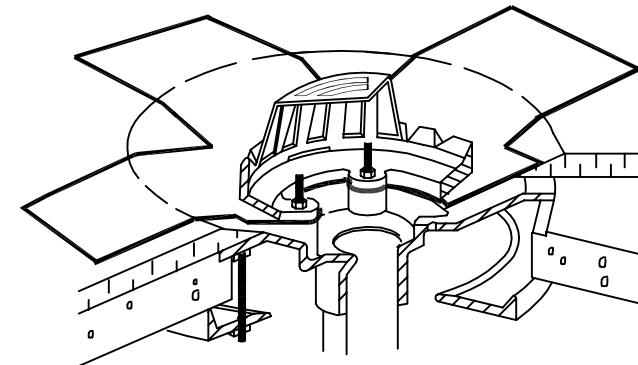
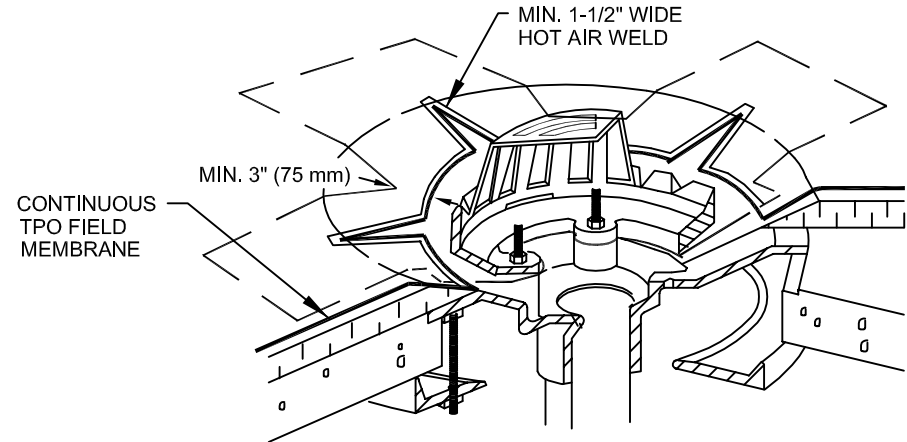
FOR DRAINS WITH TAPERED INSULATION AT DRAIN SUMP
GREATER THAN 3" TO 1 HORIZONTAL FOOT



CUT SECTION OF TPO REINFORCED MEMBRANE AS SHOWN
AND POSITION INTO DRAIN SUMP. EXTEND MEMBRANE OUT
OF DRAIN SUMP APPROXIMATELY 6" (150 mm) (ROUND
CORNERS).



EXTEND TPO REINFORCED
MEMBRANE ONTO MEMBRANE
SECTION POSITIONED AT DRAIN
SUMP AND CUT AS SHOWN TO LAY
FLAT IN SUMP. HOT AIR WELD A
MINIMUM OF 1-1/2" (40 mm)
COMPLETELY SURROUNDING
AREA.



**MULE-HIDE
PRODUCTS CO., INC.
2006**

DRAIN FLASHING W/TARGET - OPTION

TPO SYSTEMS: ALL

DETAIL NO.:
MHT-UN-511B
PAGE 2 OF 2