

INSTALL OUTSIDE  
UNIVERSAL CORNERS

USE ONE CONTINUOUS SHEET  
OF TPO REINFORCED  
MEMBRANE TO WRAP AROUND  
CURB OR FORM FROM  
COATED METAL

NOTES:

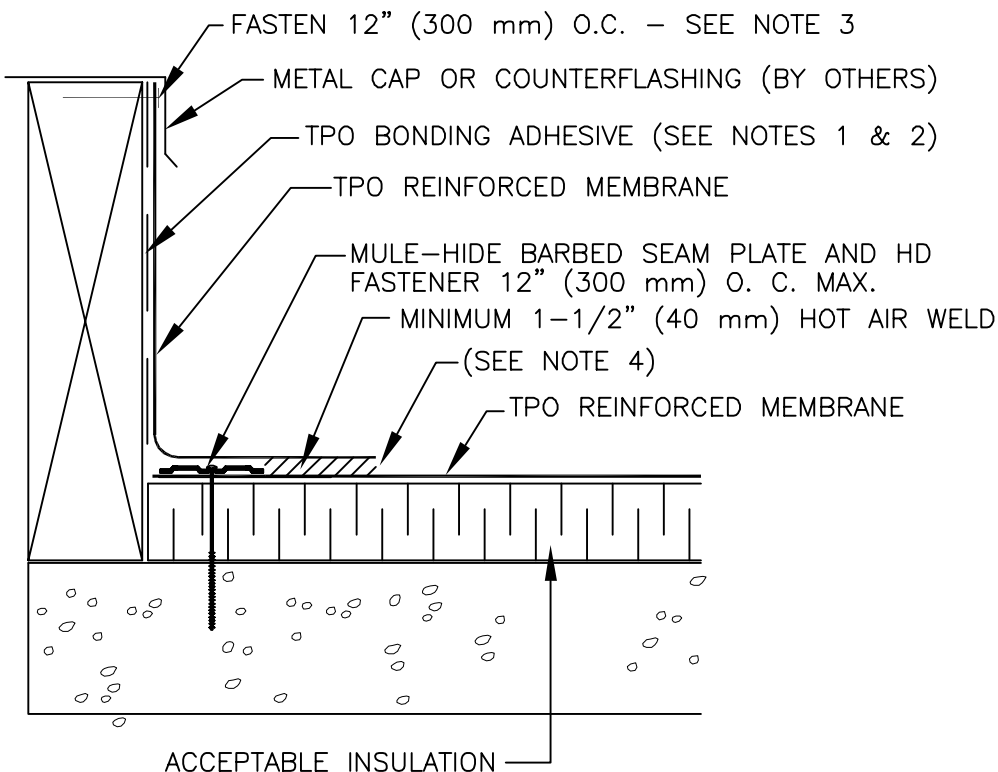
1. BONDING ADHESIVE IS NOT REQUIRED WHEN FLASHING HEIGHT IS 12" (300 mm) OR LESS AND TPO REINFORCED MEMBRANE IS FASTENED "AS SHOWN" AT TOP OF CURB.

2. WHEN MULE-HIDE ALL-PURPOSE TERMINATION BAR IS USED BENEATH THE COUNTERFLASHING, BONDING ADHESIVE CAN BE ELIMINATED WHEN THE FLASHING HEIGHT IS 18" (500 mm) OR LESS.

3. TPO REINFORCED MEMBRANE FASTENED APPROXIMATELY 12" ON CENTER. IF FASTENER PENETRATES METAL COUNTERFLASHING, USE NEOPRENE WASHER OR APPLY WATER CUT-OFF MASTIC UNDER COUNTERFLASHING OR CAULK FASTENER HEAD.

4. APPROXIMATELY 1/8" (3 mm) BEAD OF CUT-EDGE SEALANT IS REQUIRED ON CUT EDGES OF TPO REINFORCED MEMBRANE.

CREASE MEMBRANE AT ANGLE CHANGE TO  
LIMIT BRIDGING TO 3/4" (19 mm) MAXIMUM



NOTE:

THIS DETAIL IS NOT ACCEPTABLE FOR USE IN A 20-YEAR WARRANTED SYSTEM.

TO BE ELIGIBLE FOR A 20-YEAR WARRANTY A COMPRESSION SEAL WITH WATER CUT-OFF IS REQUIRED AS SHOWN IN DETAIL MHT-UN-502.

**MULE-HIDE  
PRODUCTS CO., INC.**  
2009

**CURB FLASHING**

**SYSTEMS:  
TPO  
ALL**

**DETAIL NO.:**

**MHT-UN-503**