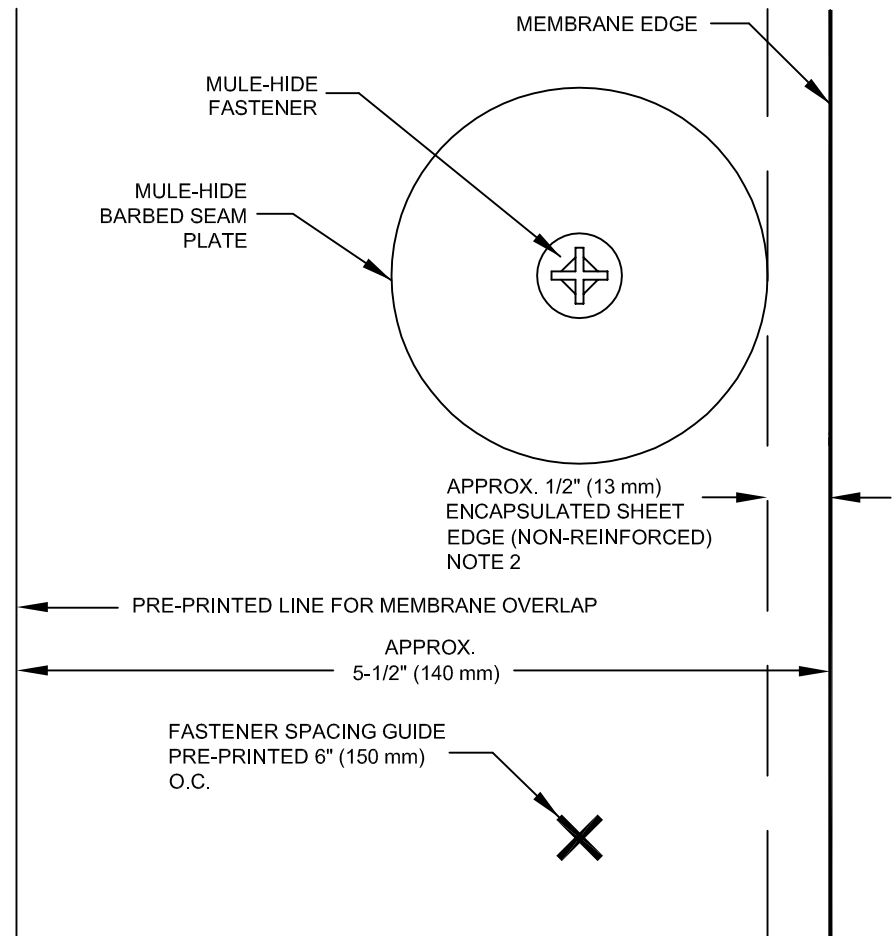


NOTE:

1. REFER TO MULE-HIDE TECHNICAL BULLETIN TPO-MA01-2006 FOR SHEET SIZE, FASTENER TYPE AND SIZE, PLATE SIZE AND SPACING REQUIRED FOR UPLIFT RESISTANCE. IF A FACTORY MUTUAL RATING OR CODE COMPLIANCE IS REQUIRED, CONTACT MULE-HIDE FOR SPECIFIC REQUIREMENTS.
2. POSITION BARBED SEAM PLATES BEYOND NON-REINFORCED ENCAPSULATED EDGE.



**MULE-HIDE
PRODUCTS CO., INC.
2006**

FIELD SEAM - PLATE POSITION
TPO SYSTEMS: MECHANICALLY ATTACHED

DETAIL NO.:
MHT-MA-104B