

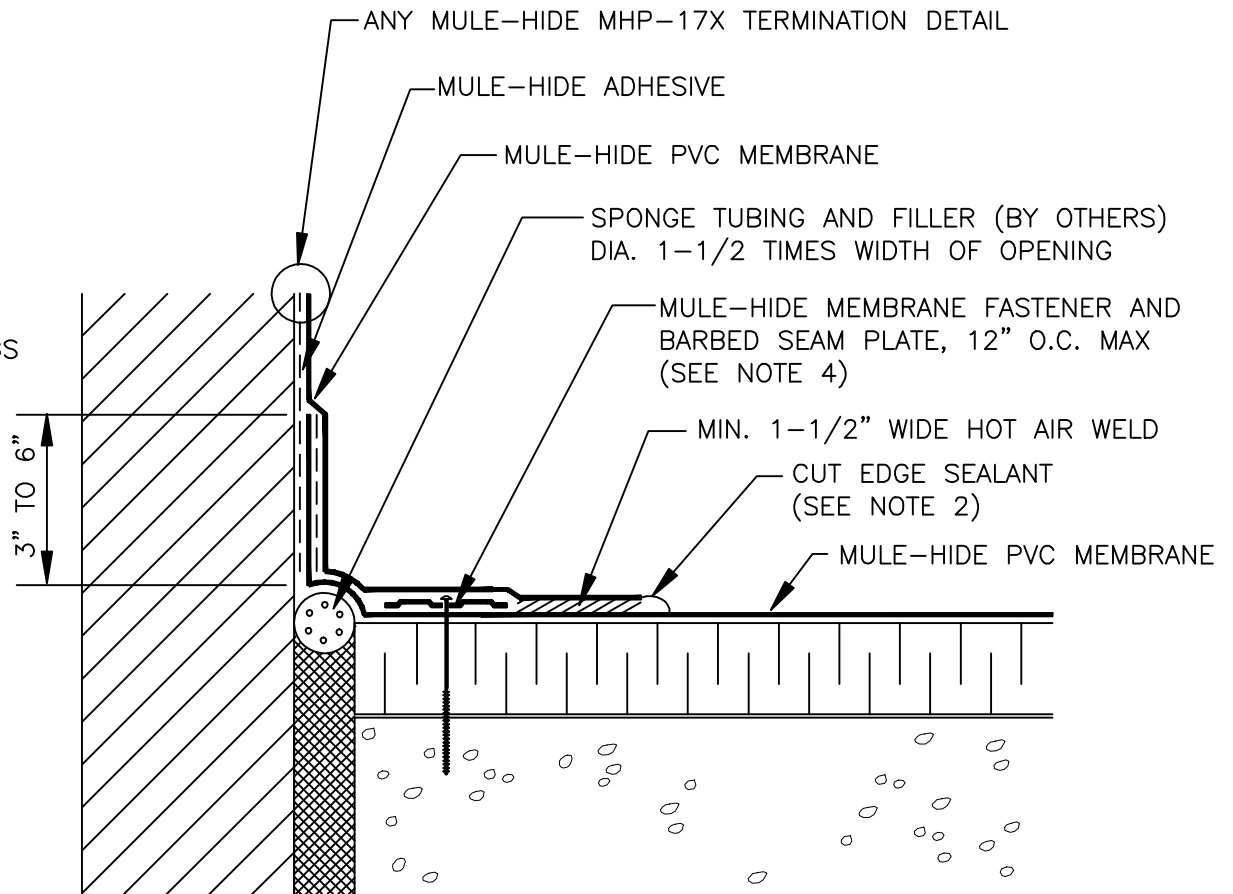
NOTES:

1. DETAILS TO BE USED IN CONJUNCTION WITH STANDARD GUIDE SPECIFICATIONS CONTAINING REQUIREMENTS FOR NAILERS, INSULATION, SLIPSHEETS, ETC.

2. PVC EDGE SEALANT IS REQUIRED ON ALL CUT OR NON-ENCAPSULATED EDGES OF REINFORCED MEMBRANE. THIS INCLUDES FACTORY CUT MEMBRANE.

3. POSITION FASTENING PLATES 1/2" MINIMUM TO 1" MAXIMUM FROM EDGE OF DECK FLANGE.

4. REFER TO MULE-HIDE UPLIFT RATINGS FOR APPROPRIATE BARBED SEAM PLATE DIAMETER, FASTNER SIZE, AND SPACING.



**MULE-HIDE
PRODUCTS CO., INC.
04/01/2007**

**EXPANSION JOINT AT JUNCTION
OF DECK AND WALL
SYSTEMS:
ALL PVC**

**DETAIL NO:
MHP-151**