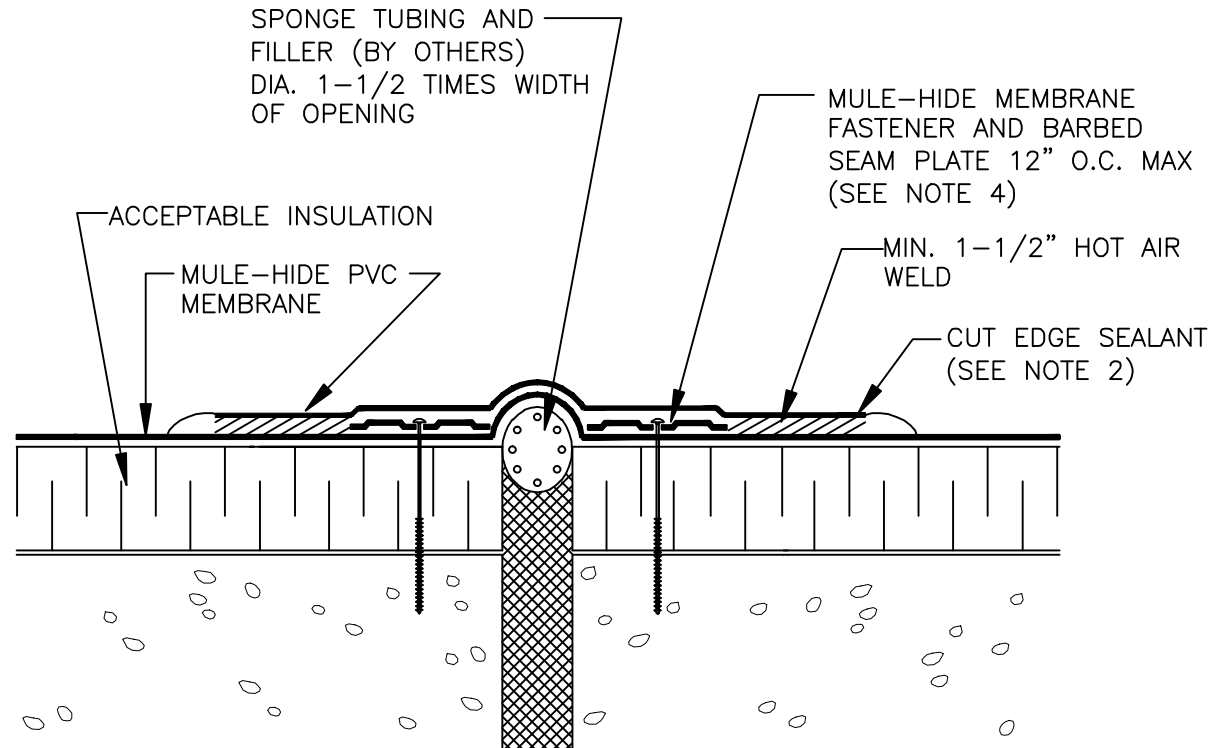


NOTES:

1. DETAILS TO BE USED IN CONJUNCTION WITH STANDARD GUIDE SPECIFICATIONS CONTAINING REQUIREMENTS FOR NAILERS, INSULATION, SLIPSHEETS, ETC.
2. PVC EDGE SEALANT IS REQUIRED ON ALL CUT OR NON-ENCAPSULATED EDGES OF REINFORCED MEMBRANE. THIS INCLUDES FACTORY CUT MEMBRANE.
3. POSITION BARBED SEAM PLATES 1/2" MINIMUM TO 1" MAXIMUM FROM EDGE OF FIELD MEMBRANE.
4. REFER TO MULE-HIDE UPLIFT RATINGS FOR APPROPRIATE BARBED SEAM PLATE DIAMETER, FASTENER SIZE, AND SPACING.



**MULE-HIDE  
PRODUCTS CO., INC.  
04/01/2007**

**EXPANSION JOINT  
DECK TO DECK  
SYSTEMS:  
ALL PVC**

**DETAIL NO:  
MHP-150**