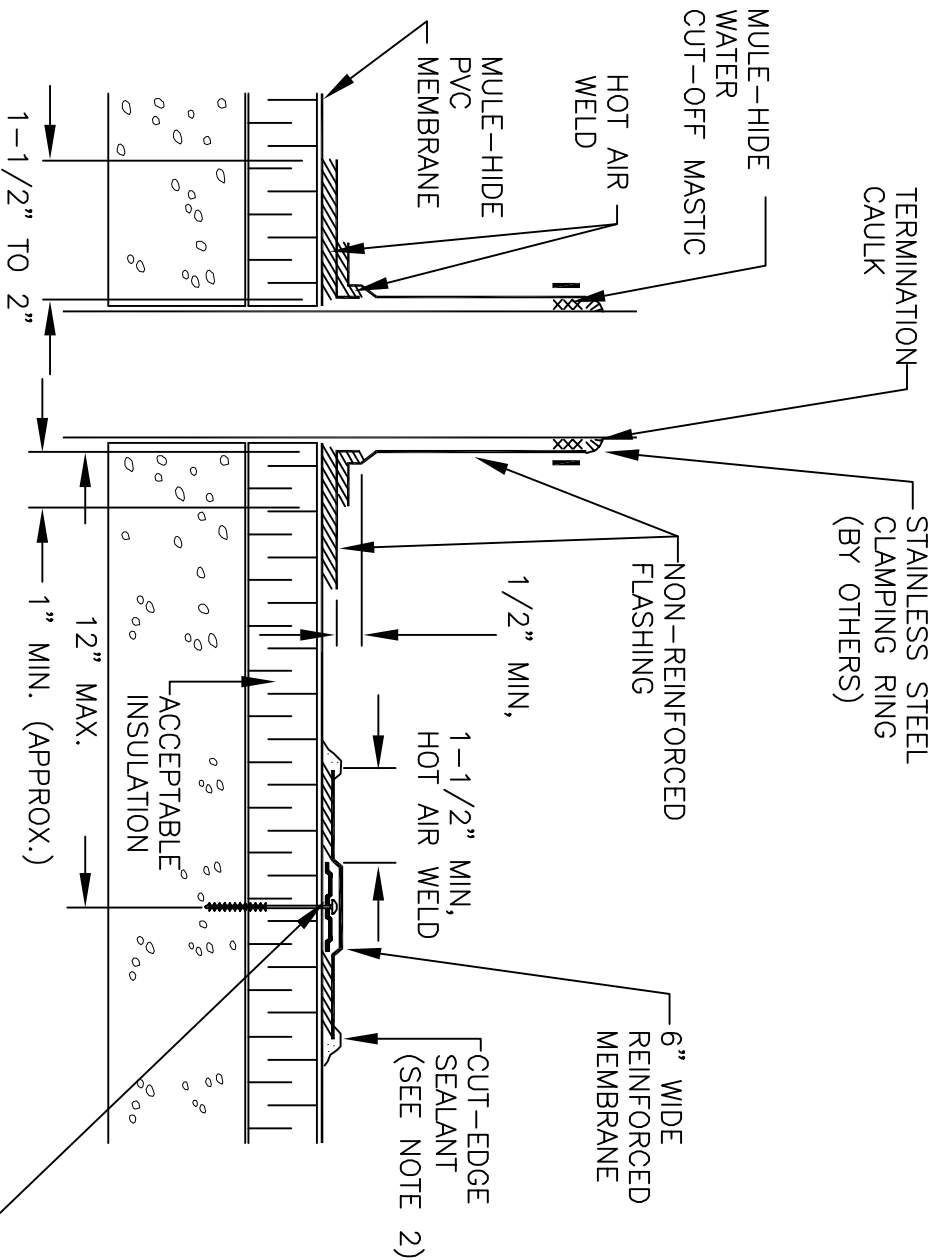


NOTES:

1. DETAILS TO BE USED IN CONJUNCTION WITH STANDARD GUIDE SPECIFICATIONS CONTAINING REQUIREMENTS FOR NAILERS, INSULATION, SLIPSHEETS, ETC.
 2. PVC EDGE SEALANT IS REQUIRED ON ALL CUT OR NON-ENCAPSULATED EDGES OF REINFORCED MEMBRANE. THIS INCLUDES FACTORY CUT MEMBRANE.
 3. REMOVE ALL LEAD AND OTHER FLASHING BEFORE INSTALLING FIELD FABRICATED PIPE SEAL.
 4. TEMPERATURE OF PIPE MUST NOT EXCEED 120° F.
 5. NON-REINFORCED MEMBRANE WRAPPED AROUND PIPE SHALL HAVE MINIMUM 1-1/2" VERTICAL HOT AIR WELD.
 6. INSTALL A MINIMUM OF 4 BARBED SEAM PLATES AROUND PIPES WITH A DIAMETER UP TO 6". ADDITIONAL FASTENING PLATES WILL BE REQUIRED FOR PIPES GREATER THAN 6" IN DIAMETER AND SHALL BE SPACED 12" ON CENTER MAXIMUM.
- FASTENERS/PLATES ARE NOT REQUIRED ON ADHERED SYSTEMS UNLESS PIPE DIAMETER EXCEEDS 18".
7. REFER TO MULE-HIDE UPLIFT RATINGS FOR APPROPRIATE BARBED SEAM PLATE DIAMETER, FASTENER SIZE, AND SPACING.



APPLY HEAT TO FLASHING AND FORM BY HAND PRIOR TO HOT AIR WELDING

MULE-HIDE MEMBRANE FASTENER AND BARBED SEAM PLATE, MAX. 12" O.C. (NOTES 6 & 7)

**MULE-HIDE
PRODUCTS CO., INC.
04/01/2007**

**FIELD FABRICATED PIPE FLASHING
SYSTEMS:
FULLY ADHERED AND
MECHANICALLY ATTACHED PVC**

**DETAIL NO:
MHP-141**