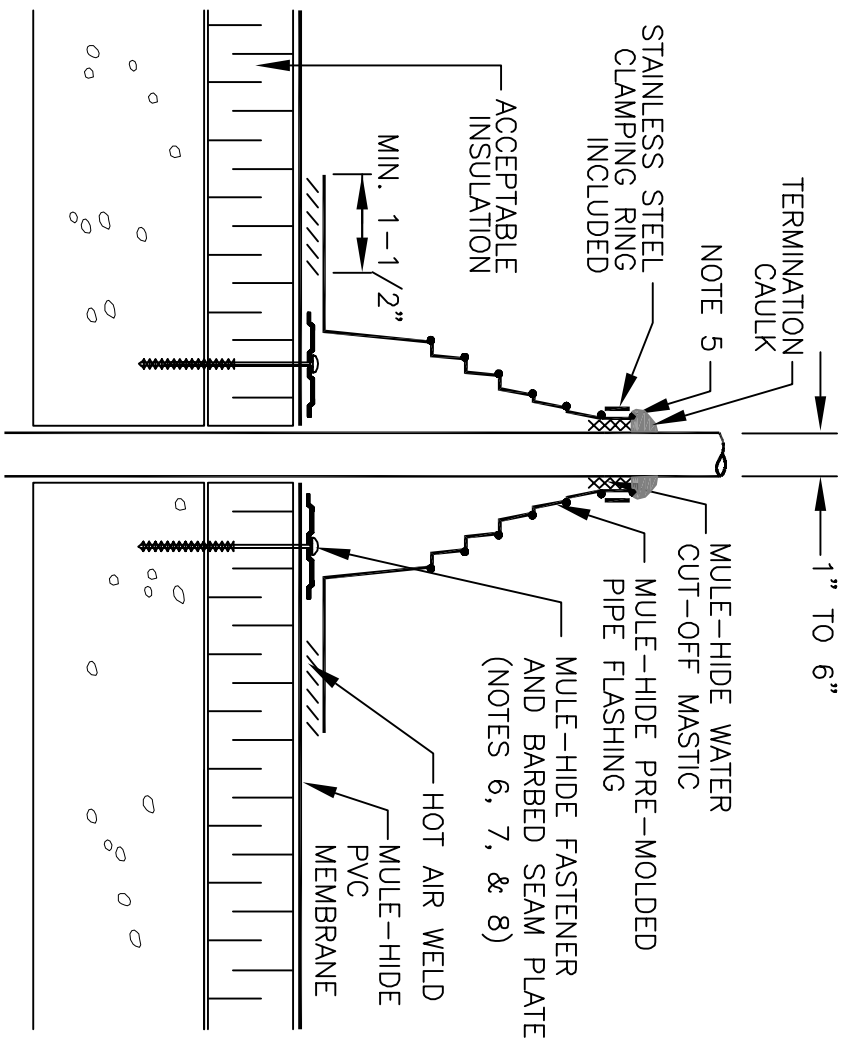


NOTES:

1. DETAILS TO BE USED IN CONJUNCTION WITH STANDARD GUIDE SPECIFICATIONS CONTAINING REQUIREMENTS FOR NAILERS, INSULATION, SLIPSHEETS, ETC.
 2. PVC EDGE SEALANT IS REQUIRED ON ALL CUT OR NON-ENCAPSULATED EDGES OF REINFORCED MEMBRANE. THIS INCLUDES FACTORY CUT MEMBRANE.
 3. REMOVE ALL LEAD AND OTHER FLASHING.
 4. TEMPERATURE OF PIPE MUST NOT EXCEED 120° F.
 5. PIPE SEAL MUST HAVE INTACT RIB AT TOP EDGE, REGARDLESS OF PIPE DIAMETER.
 6. INSTALL 3 FASTENERS AND PLATES AROUND PIPE EQUALLY SPACED. FASTENERS MAY ALSO BE POSITIONED MAXIMUM 12" FROM PIPE, FASTENED 12" ON CENTER AND FLASHED WITH MULE-HIDE PVC REINFORCED MEMBRANE.
- FASTENERS/PLATES ARE NOT REQUIRED ON ADHERED SYSTEMS UNLESS PIPE DIAMETER EXCEEDS 18".
7. IF PLATES CANNOT BE INSTALLED AS SHOWN THEY CAN BE POSITIONED OUTSIDE THE PIPE FLASHING FLANGE AND FLASHED WITH 6" WIDE REINFORCED MEMBRANE.
 8. REFER TO MULE-HIDE UPLIFT RATINGS FOR APPROPRIATE BARBED SEAM PLATE DIAMETER, FASTENER SIZE, AND SPACING.



**MULE-HIDE
PRODUCTS CO., INC.
04/01/2007**

**PVC PRE-MOLDED PIPE FLASHING
SYSTEMS:
MECHANICALLY ATTACHED PVC**

**DETAIL NO:
MHP-140**