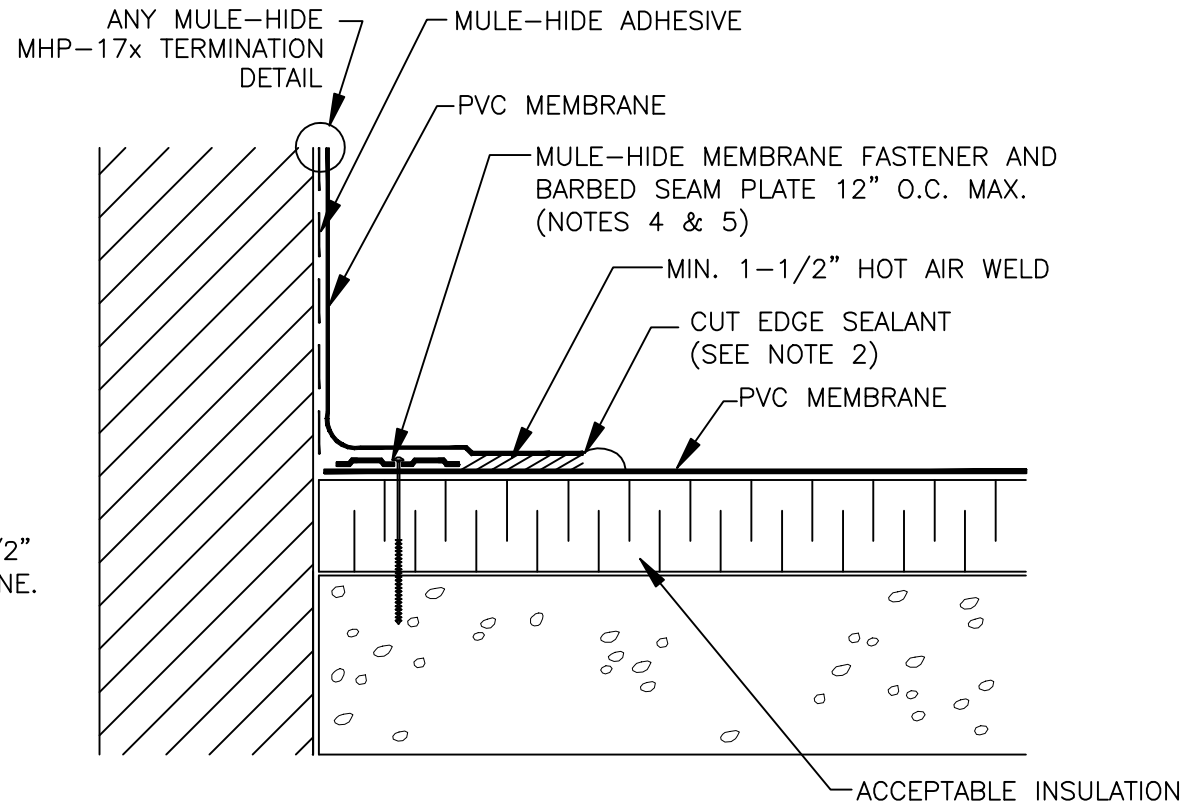


NOTES:

1. DETAILS TO BE USED IN CONJUNCTION WITH STANDARD GUIDE SPECIFICATIONS CONTAINING REQUIREMENTS FOR NAILERS, INSULATION, SLIPSHEETS, ETC.
2. PVC EDGE SEALANT IS REQUIRED ON ALL CUT OR NON-ENCAPSULATED EDGES OF REINFORCED MEMBRANE. THIS INCLUDES FACTORY CUT MEMBRANE.
3. POSITION FASTENING PLATES 1/2" TO 1" FROM EDGE OF DECK MEMBRANE.
4. FASTENING PLATES CAN BE INSTALLED VERTICALLY.
5. REFER TO MULE-HIDE UPLIFT RATINGS FOR APPROPRIATE BARBED SEAM PLATE DIAMETER, FASTENER SIZE, AND SPACING.



**MULE-HIDE
PRODUCTS CO., INC.
04/01/2007**

**PARAPET FLASHING
SYSTEMS:
ALL PVC**

**DETAIL NO:
MHP-120**