



# What more could you want?

**A roof with fast, clean installation with a choice of 11 Cap Sheet colors.**

Mule-Hide Self-Adhering Modified Bitumen features the time-proven modified bitumen formulations installed for years but without the asphalt bleed-out and mess. Crews simply place, remove release film, and roll. Patented pressure sensitive adhesive manufacturing technologies deliver a roofing system with reliable seams and years of field-proven performance through winters and summers, in cold and hot climates. It's fast, clean, and safe for minimal disruption to building operations and occupants.

**No hot kettles, no flames, and fume free.**



## The story behind the Mule-Hide name...

The original Mule-Hide trade name was registered in 1906. Mule-Hide manufactured top quality roofing products that quickly gained a reputation for long lasting performance. The "Mule-Hide" name developed because of an incident witnessed outside an office in Chicago. As the story goes, a horse drawn wagon with four horses was stuck in the mud. To help out, another driver hitched two more horses to the wagon. They were still unsuccessful. A short time later, a wagon with two mules came by. They took off all of the horses and hooked up the two mules. The mules dug down hard and pulled the wagon out. The impressive strength and durability of the mules would express those same qualities associated with the roofing materials Mule-Hide Products came to represent.



## A Mule-Hide Self-Adhering Modified Bitumen Roof gives you installed cost value and peace of mind.

- Reinforced membrane offers long-term, watertight integrity you can count on.
- No hot asphalt, flames, or fumes near building occupants.
- Minimal disruption to building operations and the environment.
- Elevator portability to the rooftop for high-rise projects.
- Fast installation combined with a long lifecycle means installed cost value.
- Membrane meets or exceeds ASTM performance standards.
- UL and FM listed assemblies available.
- Mule-Hide Manufacturer Warranties available.

*For more information contact:*



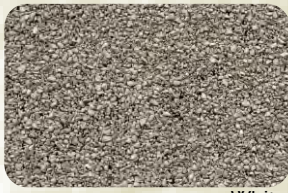
Red Blend



Pine Green



Buff



White



Oak



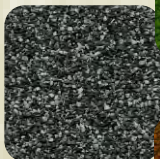
Chestnut



Weatherwood



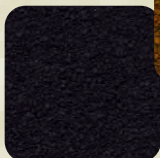
Green  
(Special Order)



Grey Slate



Red  
(Special Order)



Black

# What can you expect from your Mule-Hide Self-Adhering Modified Bitumen Roof?

## Fast, Clean, Safe Installation

Crews simply place, remove release film and roll with no flames, fumes, odors.

## Attractive Roof

Attractive ceramic granule surface (available in 11 popular colors).



## Long Lifecycle

Manufactured with patented Adeso® self-adhesive technology using reinforced membrane and proprietary adhesive formulation on the bottom surface.

## Strength

Mule-Hide Self-Adhering Modified Bitumen Roofing Systems are the result of the latest adhesive technology combined with proven waterproofing compounds. SEALLap® & FASTLap® engineering provides stronger, more reliable seams.

## Repairable

Mule-Hide Self-Adhering Modified Bitumen membrane is self-sealing so it remains repairable year after year, allowing for ease of future cutouts and tie-ins.

## Environmentally Friendly

No fumes, no odors or disposal concerns.

This information herein is based upon data and knowledge considered to be true and accurate and is provided for the specifier's consideration, investigation and verification. Technical information is subject to change rapidly and it is not possible to guarantee that all items will be accurate at all times. Visit the Mule-Hide website at [www.mulehide.com](http://www.mulehide.com) prior to any installation for updated technical specifications and details. However, Mule-Hide Products Co., Inc. does not warrant any results to be obtained. Statements concerning possible use of Mule-Hide products are made without knowledge of your particular roof and such an application may not be fit for your particular purpose. MULE-HIDE DISCLAIMS ALL WARRANTIES, INCLUDING THE IMPLIED WARRANTY OF MERCHANTABILITY AND FITNESS FOR A PARTICULAR PURPOSE, except written warranties attached to Mule-Hide products and written warranties signed by an officer of Mule-Hide.



*"The name trusted in roofing since 1906"*

## MULE-HIDE PRODUCTS Co., Inc.

1-800-786-1492  
[www.mulehide.com](http://www.mulehide.com)

©2003 Mule-Hide Products Co., Inc.

FASTLap, SEALLap, Adeso are U.S. registered trademarks.

Printed in USA 2/10

MH LIT# 90.00515